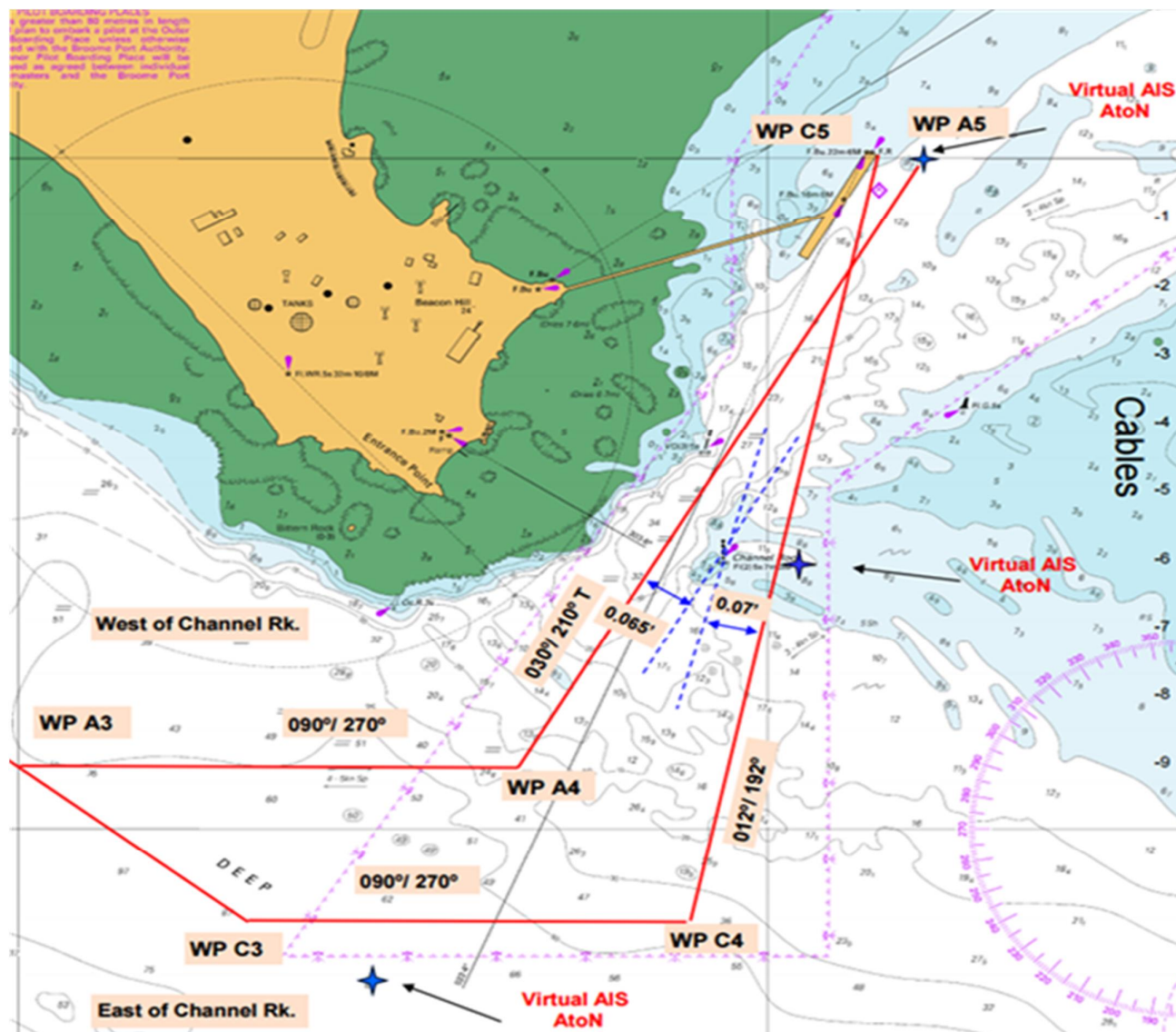


The Port Passage Plan is provided here as a reference only. Displayed is a passage for both East and West of Channel Rock dependent on the state of tide and tidal flows and as guided by the Pilot. Courses, distances and Way Points are for reference only. Master's & Officers are to continuously monitor the vessel's position and if any time there is a doubt, this is to be brought to the immediate attention of the Pilot.



Way Points for:

West of Channel Rock WP (Pilot)	A1 17_58.04q S 122° 05.40qE	A2 17° 58.31q S 122° 08.66qE
A3 18° 00.90q S 122° 12.00qE	A4 18° 00.90q S 122° 12.68qE	
A5 18° 00.00q S 122° 13.22qE (Off the Berth)		
East of Channel Rock WP A1 & A2 as above	C3 18° 01.15q S 122° 12.30qE	
C4 18° 01.15q S 122° 12.90qE	C5 18° 00.00q S 122° 13.15qE (Off the Berth)	