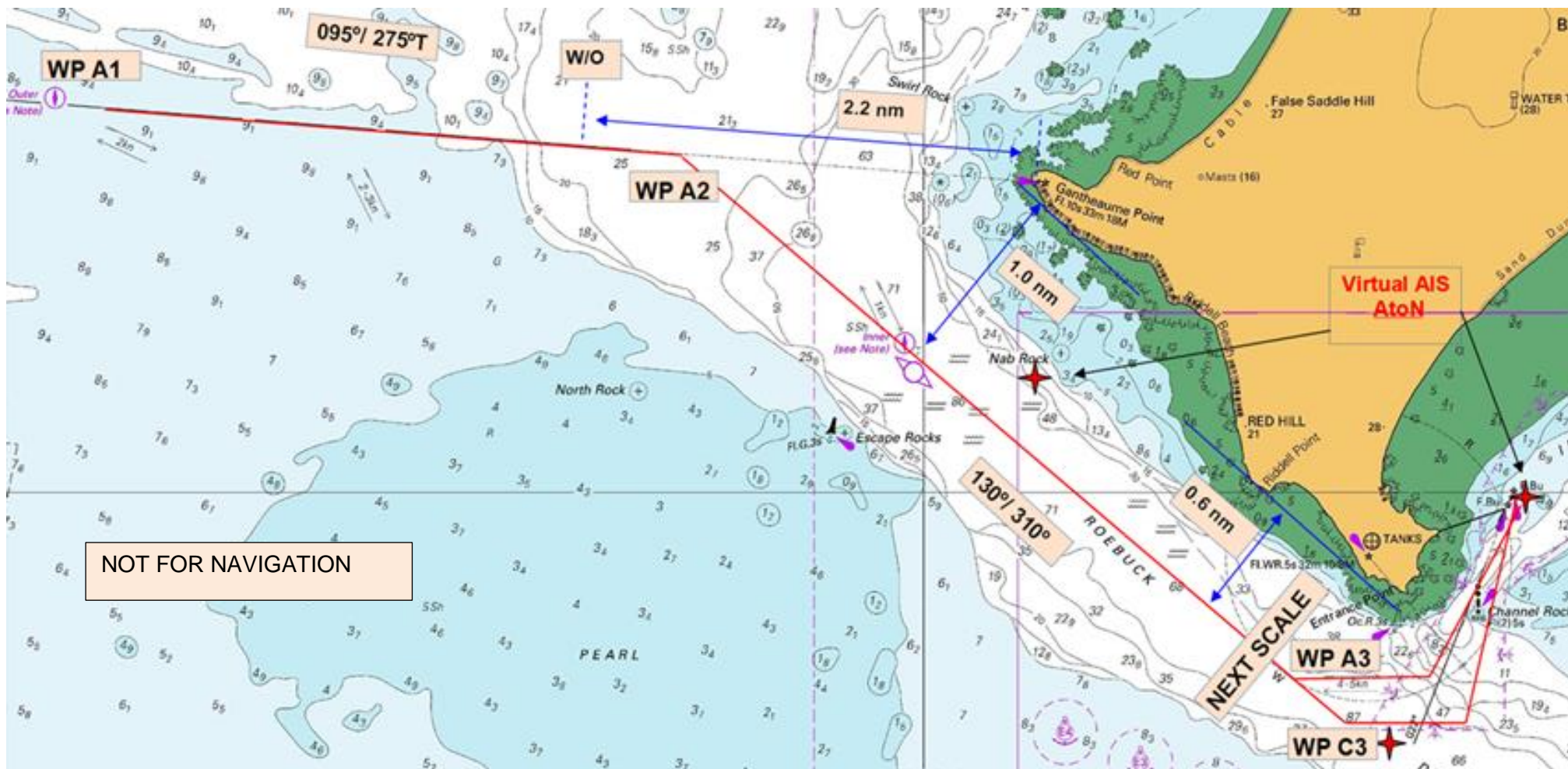


The Port Passage Plan is provided here as a reference only. Displayed is a passage for both East and West of Channel Rock dependent on the state of tide and tidal flows and as guided by the Pilot. Courses, distances and Way Points are for reference only. Master's & Officers are to continuously monitor the vessel's position and if any time there is a doubt, this is to be brought to the immediate attention of the Pilot.



Way Points for:

West of Channel Rock	WP	(Pilot)	A1 17° 58.04' S 122° 05.40' E	A2 17° 58.31' S 122° 08.66' E
A3	18° 00.90' S 122° 12.00' E		A4 18° 00.90' S 122° 12.68' E	A5 18° 00.00' S 122° 13.22' E (Off the Berth)
East of Channel Rock	WP A1 & A2 as above		C3 18° 01.15' S 122° 12.30' E	
C4	18° 01.15' S 122° 12.90' E		C5 18° 00.00' S 122° 13.15' E (Off the Berth)	