

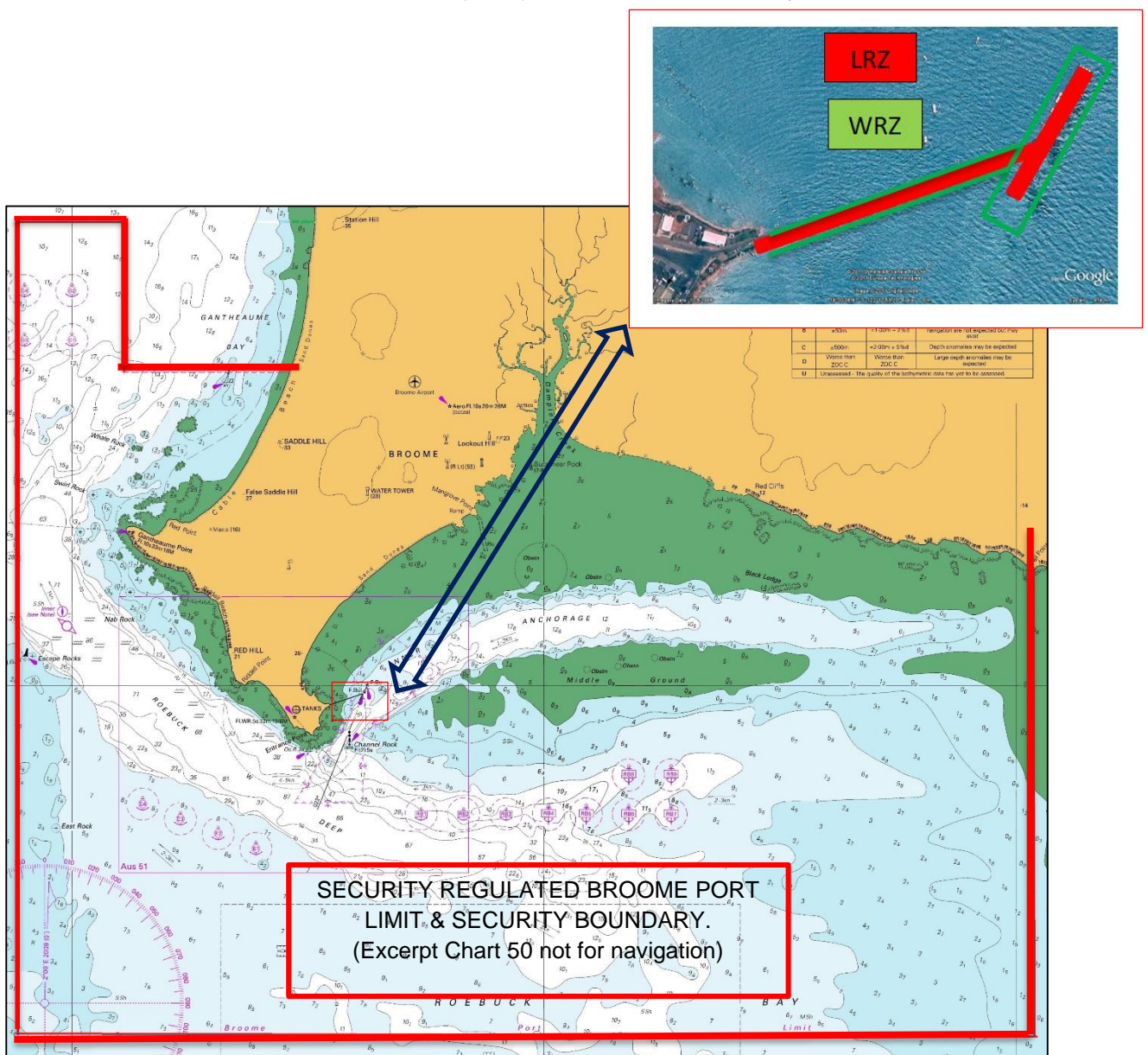
# SECURITY REGULATED BROOME PORT LIMIT & SECURITY BOUNDARY

## Maritime Transport and Offshore Facilities Security Act 2003

This map identifies the boundaries of the security regulated port and where the seaward boundary meets land it extends to the high water mark, and inset the Landside Restricted Zone for the Port of Broome.

**LRZ** – Landside Restricted Zone: This is the area from the Security Gate to the wharf including the jetty roadway (Jetty Neck) and incorporates the whole structure down to the sea bed

**WRZ** – Waterside Restricted Zone: This is an area extending from the Wharf head out 60m in all directions. As well as all the area and water beneath the LRZ on the Jetty Neck. Vessels must not enter the WRZ without prior permission from Security.



This map identifies in red the boundaries of the security regulated port and where the seaward boundary meets the land it extends to the high water mark.

